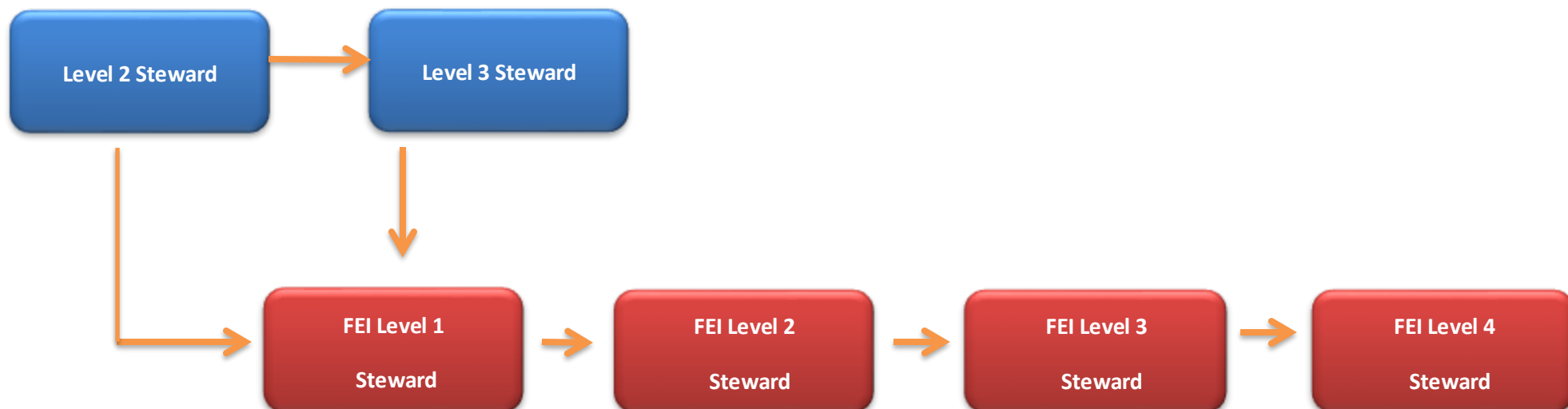


STEWARDS

TRAINING & DEVELOPMENT PATHWAY



Stewards Progression Chart

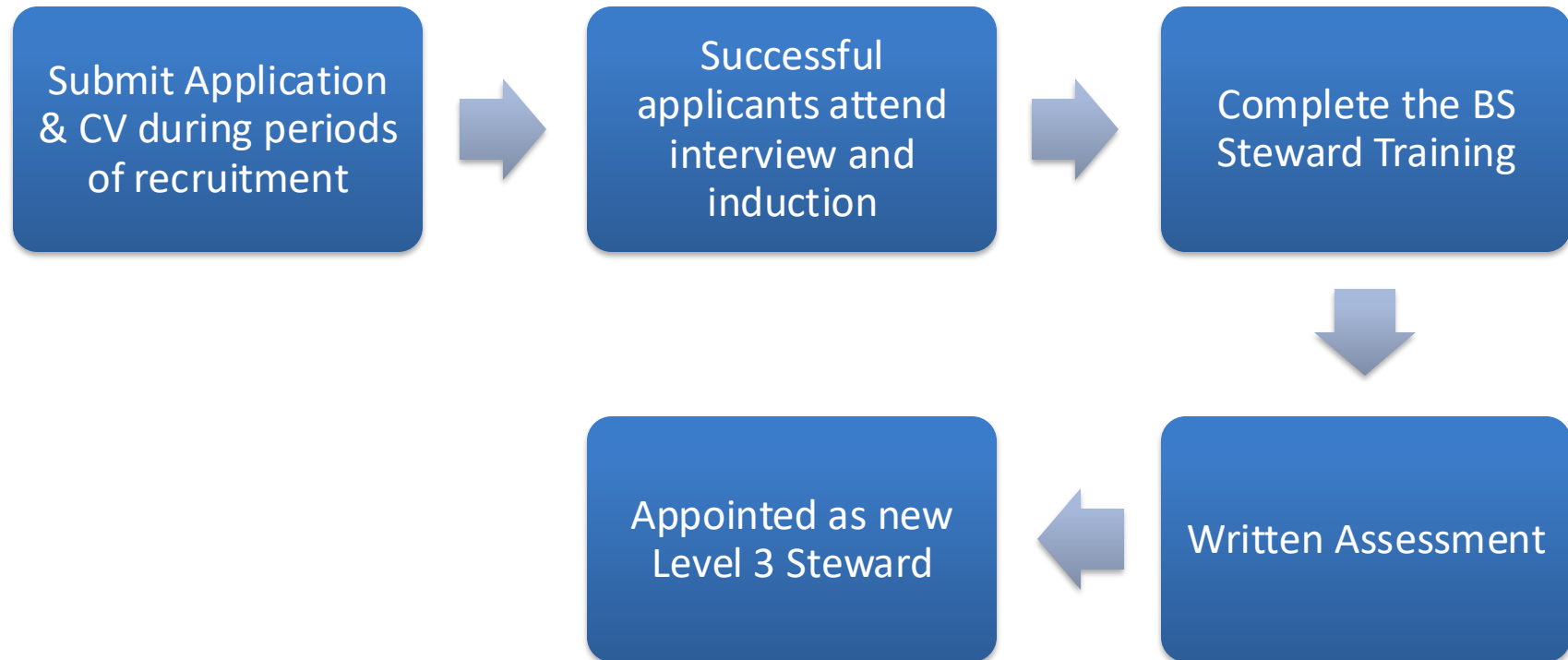
Details of how to progress through the levels are detailed below, including the key criteria and competencies which need to be met for each progression.

Officials can progress onto the FEI ladder by applying to British Showjumping. Once endorsed by British Showjumping, applications will be then submitted to the FEI for assessment, approval & inclusion on the Stewards list.

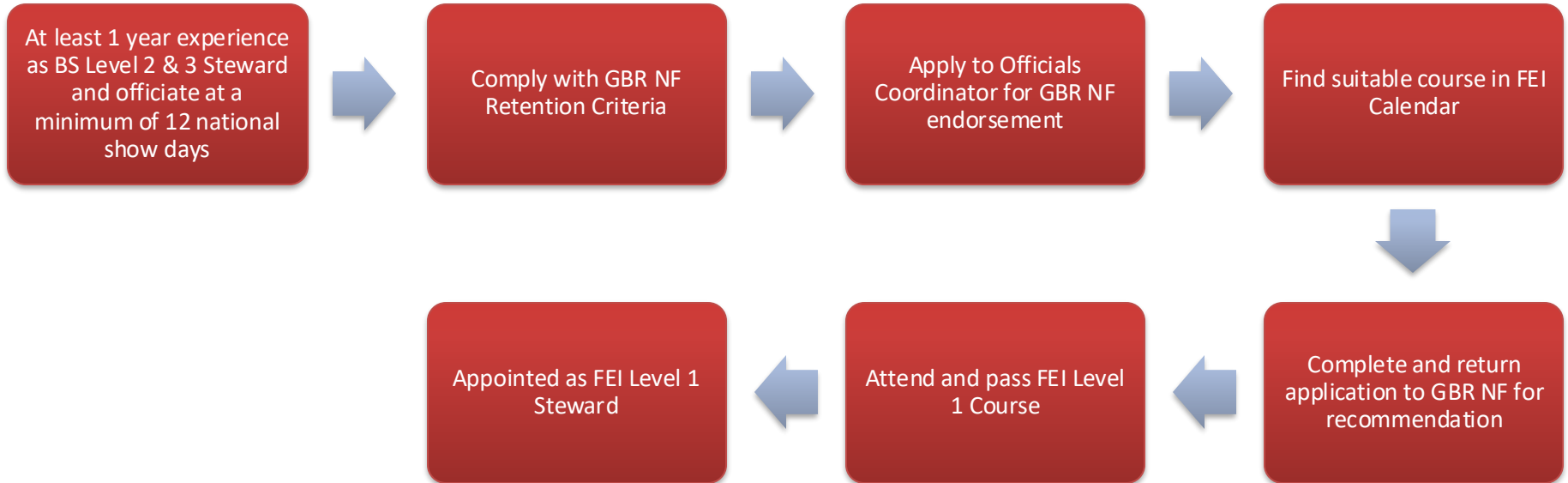
Becoming a Level 2 Steward



Becoming a Level 3 Steward



Becoming a FEI Level 1 Steward



FEI Application & Upgrade policy

All FEI Officials Applications, including FEI Officials upgrades will need GBR NF recommendation as per the FEI pathway. GBR NF Recommendations will only be given to those candidates who are current National Officials, (in the relevant Official category), fully compliant with their retention criteria and whose work is known to the National Governing body so we are able to comment on and endorse appropriately.

RETENTION AND CONTINUING PROFESSIONAL DEVELOPMENT (CPD) NOTES

- Level 2 & 3 Stewards must attend a Stewards CPD Day every 2 years
- Level 2 Stewards must complete a minimum of 6 British Showjumping show days a year, must demonstrate commitment to CPD
- Level 3 Stewards must complete a minimum of 10 British Showjumping show days a year, must demonstrate commitment to CPD
- All Levels must hold a current certificate in the safeguarding of children and vulnerable persons.
- All levels must complete the minimum show days a year to be retained at current level, if not, they may be downgraded.
- Level 2 & 3 Stewards must complete the Self-Declaration and Disclosure Form